

PATHWAYS SCHOOL

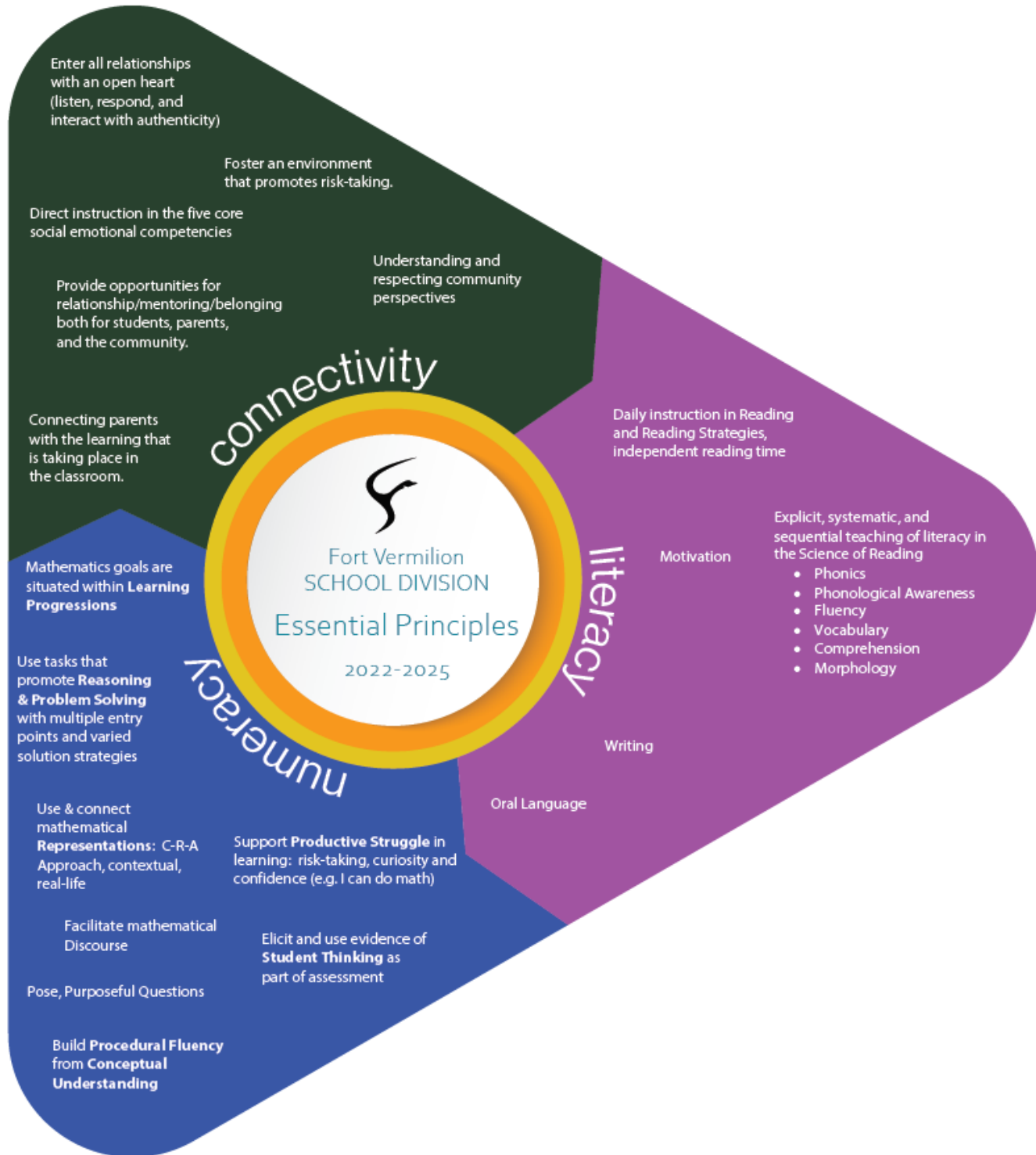
2023-2024 SCHOOL ASSURANCE PLAN



Principal: Kim Brown

Trustee: Marc Beland & Shane Lloyd

Our Children, Our Students, Our Future



Priority	Essential Principle Focus for Improvement <i>Highlight one/two Essentials for improvement for each Priority</i>	School Goal <i>Reframe the Division Goal into a School Goal that highlights school focus</i>	Baseline Data <i>(current reality)</i>	Target Data <i>(desired reality)</i>	Implementation Plan <i>Consider research and best-practice in the short and long term</i>	Short Report <i>(completed as data becomes available)</i>
<p>Connectivity</p> <p>FVSD will foster connectivity and well-being amongst community, students, parents, and staff</p>	<p>Enter all relationships with an open heart, understanding individual circumstance.</p>	<p>Adapt learning materials/modality to meet the needs of the students so that there is an increase the number of students earning their High School Diploma/Certificate of Achievement within 4 years.</p>	<p>Improve Pathway's graduation rate.</p> <p>Currently 62 students registered in grade 12 and 15 graduates 2023 (24%). Age range of 17-20.</p> <p>Accountability Pillar results.</p>	<p>Improve graduation rate by 20%</p>	<p>Learning Strategies 15 for Grade 10 students</p> <p>CALM – Presentation from the Wellness Coaches</p> <p>Tech Presentation Balancing Technology in our Lives</p> <p>Small School Timetable for more synchronous instruction.</p> <p>Guidelines for course completion</p> <p>K&E Courses developed that reflect and support the needs of the learners.</p> <p>Increase workshops for Skill Certification</p>	

<p>Literacy</p> <p>All students will improve literacy skills</p>	<p>Competency in Written Expression</p>	<p>95% of students' writing scores in both Ideas and Presentation will be SATISFACTORY or PROFICIENT.</p>	<p>Data will include the PAT and DIP Part A Marks for Social and ELA. *June 2023 data will be added in August.</p>	<p>PAT ELA and DIP Social/English Marks will have 90% of students meeting the acceptable standard.</p>	<p>*Grade 10 – Writing 15 Course developed for all students entering Pathways. *Junior High Writing Program will use LC Critical Essays unit Use a conferencing model to provide feedback.</p>	
<p>Numeracy</p> <p>All students will improve numeracy skills</p>	<p>Mathematical goals are situated within Learning Progressions</p>	<p>95% of students will show improvement on the WRAT –5. Math PAT marks – broken down by K&E and regular.</p>	<p>WRAT –5 Data *All Grade 10s will complete the WRAT –5.</p>	<p>All students in grade 7-10, who have a standard score less than 100 will improve 5 standard points from September 2023 – May 2024. Student assessments in Math 10-3/20-3 will demonstrate 70% mastery of outcomes or better. Grade 9 PAT Math Marks will have 90% of students meeting the acceptable standard.</p>	<p>*Introductory High School Math courses will include video/and synchronous instruction. *Math 15 is developed as a prerequisite for High School Math. Develop strategies to support students by understanding where the gaps in their learning are using an understanding of progressions. Math Working Group for staff development.</p>	

Data:

High School Completion Rates:

School: 1715 Pathways

Province: Alberta

	Pathways										Alberta												
	2017		2018		2019		2020		2021		Measure Evaluation			2017		2018		2019		2020		2021	
	N	%	N	%	N	%	N	%	N	%	Achievement	Improvement	Overall	N	%	N	%	N	%	N	%	N	%
3 Year Completion	13	31.0	18	22.6	22	18.5	13	46.4	27	26.5	Very Low	Maintained	Concern	44,982	78.7	44,978	79.7	45,354	80.3	46,245	83.4	47,675	83.2
4 Year Completion	13	31.6	14	57.7	20	40.8	22	46.2	13	61.9	Very Low	Maintained	Concern	44,841	83.0	44,994	83.3	44,980	84.0	45,351	85.0	46,242	87.1
5 Year Completion	13	54.4	15	48.1	16	63.4	20	51.2	23	52.9	Very Low	Maintained	Concern	43,736	83.8	44,842	85.2	44,988	85.3	44,972	86.2	45,344	87.1

English 30-2 Results:

Diploma Exam Results By Course

School: 1715 Pathways

Province: Alberta

English Lang Arts 30-2

	Pathways					Alberta				
	2018	2019	2020	2021	2022	2018	2019	2020	2021	2022
Students Writing	22	14	n/a	n/a	5	16,184	16,640	n/a	n/a	8,903
Diploma Examination Acceptable Standard (%)	68.2	78.6	n/a	n/a	*	88.0	87.1	n/a	n/a	80.8
Diploma Examination Standard of Excellence (%)	0.0	7.1	n/a	n/a	*	13.1	12.1	n/a	n/a	12.3
School Awarded Acceptable Standard (%)	100.0	100.0	n/a	n/a	*	95.9	96.1	n/a	n/a	96.6
School Awarded Standard of Excellence (%)	4.5	28.6	n/a	n/a	*	15.2	15.4	n/a	n/a	19.9

Junior High Literacy:



Junior High Numeracy:



As the representative of the School Council at this school, I hereby give my endorsement to this School Assurance Plan for the 2022-23 school year. I hereby acknowledge that the school council has had opportunity to provide feedback on this plan and support it as is here presented.

School Council Chair

Date

As Principal of this school, I hereby submit our School Assurance Plan for the 2022-23 school year. This plan has been created in collaboration with all staff at this school, as well as with the school council.

Principal

Date

Results