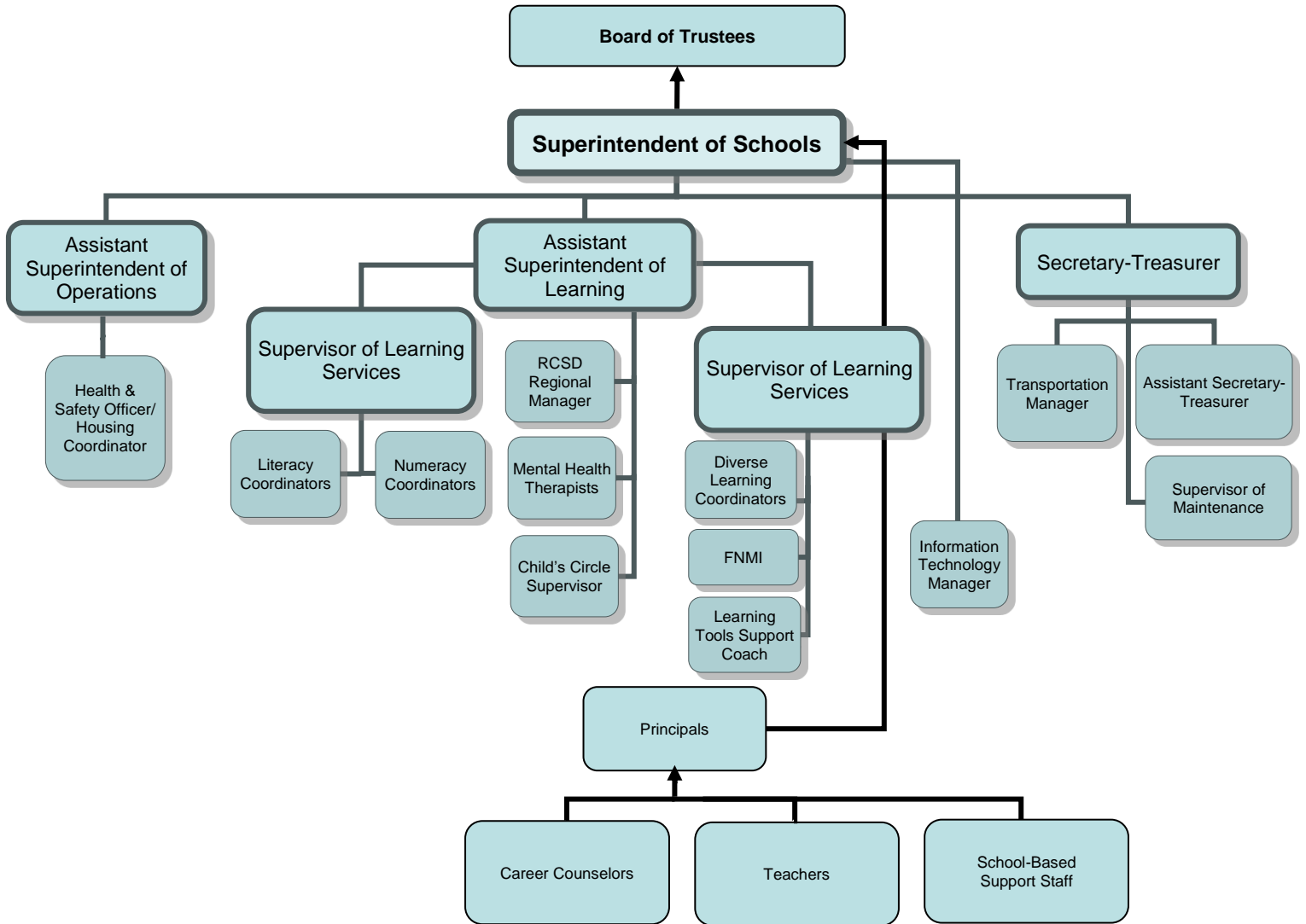


Fort Vermilion School Division No. 52 Organizational Chart



Notes:

- Principals also report to the Assistant Superintendents, Secretary-Treasurer and Supervisor of Learning Services for matters pertaining to their corresponding departments. At any time, a principal can communicate with the Superintendent in any matter affecting their school.
- The Child's Circle, Mental Health Capacity Building, Community Helpers and Regional Collaborative Service Delivery Programs are governed by the Assistant Superintendent of Learning.
- Inclusive Education Coordinators report to the Supervisor of Learning Services.